

On the road

Driving

Drive-ready state

Switching on drive-ready state



- 1. Depress the brake pedal.
- 2. Press the Start/Stop button.

Drive-ready state is activated:

- ▶ Starting of combustion engine.
- ▶ Drive-ready state for electric driving without starting the engine.

Switching off drive-ready state




- 1. Engage selector lever position P with the vehicle stopped.
- 2. Press the Start/Stop button.
The engine is switched off.
- 3. Set the parking brake.

Hybrid system driving modes

Overview



Buttons in the vehicle

Button	Driving mode
	In HYBRID STANDARD and HYBRID ECO PRO, the vehicle is moved in hybrid mode, i.e., the drive combines the combustion engine and electric motor.
	In ELECTRIC STANDARD and ELECTRIC INDIVIDUAL, the vehicle is driven exclusively electrically. ELECTRIC INDIVIDUAL can be specified as the default mode.
	With BATTERY CONTROL, the electric range can be maintained and conserved for a later point in the trip or increased as needed.

Auto Start/Stop function

The Auto Start/Stop function helps save fuel. The system switches off the combustion engine when conditions for electric driving have been met. The standby state remains on. READY is displayed in the instrument cluster. If necessary, the combustion engine starts automatically.

Parking brake

Setting



Pull the switch.

The LED on the switch and the indicator light in the instrument cluster are illuminated.

Releasing



With drive-ready state switched on:

Press the switch while stepping on the brake pedal or selector lever position P is set.

The LED and indicator light go out.

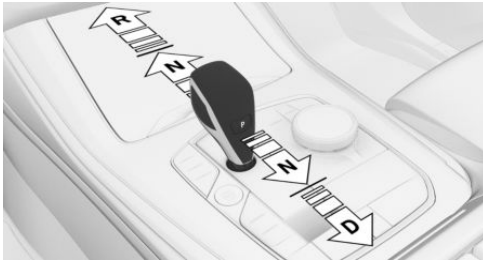
The parking brake is released.

Parking

The parking brake is automatically set if the vehicle is being held by Automatic Hold and the drive-ready state is switched off or the vehicle is exited.

Steptronic transmission

Engaging selector lever position D, N, R



- ▶ Drive mode D.
- ▶ Neutral N.
- ▶ R is reverse.

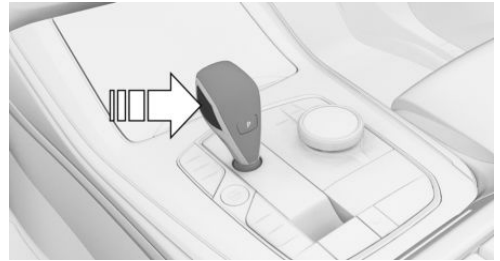
With the driver's safety belt fastened, briefly push the selector lever in the desired direction, past a resistance point, if needed. The selector lever returns to the center position in each case.

To prevent the vehicle from creeping after you select a drive mode or reverse, maintain pressure on the brake pedal until you are ready to start.

A selector lever lock prevents the inadvertent shifting to selector lever position R or the inadvertent shifting from selector lever position P.

Engage selector lever position R only when the vehicle is stationary.

Releasing the selector lever lock



Press the button.

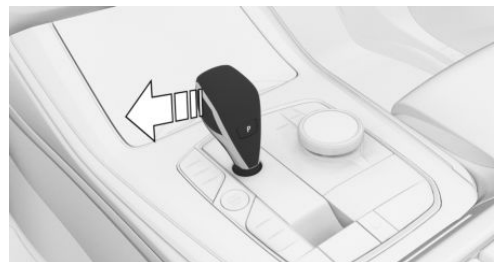
Engaging P

Engage selector lever position P only when the vehicle is stationary.



Press button P.

Steptronic transmission, Sport program and manual mode



Activate the Sport program/manual mode:

Press the selector lever to the left from selector lever position D.

Manual mode: